



# VISITORS' GUIDE TO THE VALLEY



2023/24



# CONTENTS

<b>2</b>	Table of Contents	<b>11</b>	Family Stand
<b>3</b>	Introduction	<b>12</b>	Family Activity Zone (FAZ)
<b>4</b>	Tickets	<b>13</b>	Catering & Hospitality
<b>5</b>	Getting to The Valley	<b>14</b>	Supporters' Groups
<b>6</b>	Arriving at The Valley	<b>15</b>	Museum
<b>7</b>	Fans' Bar & Bartram's	<b>16</b>	Valley Gold
<b>8</b>	Information for Disabled Supporters	<b>17</b>	Matchday Timetable
<b>9</b>	Valley Review	<b>18</b>	Close to The Valley
<b>10</b>	The Valley Superstore	<b>19</b>	Valley Facts
		<b>20</b>	Social Media



# THANK YOU FOR CHOOSING TO JOIN US AT THE VALLEY

This guide provides details on everything from match tickets and the stadium itself to the Charlton Athletic Museum and our Family Activity Zone and we hope that our guide will have the answers to all of your questions.

We also send an email out to supporters prior to every home game with more information about each match so make sure you are registered and have selected 'yes' to receiving our marketing messages to find out more! You can update your profile to make sure you are subscribed and can receive these messages by logging into the ticketing website and selecting personal details, where there will be an option to opt-in or call the Ticket Office on **03330 14 44 44**.

## COME ON YOU REDS!





# TICKETS

There are three ways to purchase seats for fixtures at The Valley.



## IN PERSON

The club's Ticket Office is available to visit at the following times:

**Monday to Friday 11am - 5pm.**

On weekend matchdays, the Ticket Office will be open from **10am until half-time.**

Prices increase two days before matchday by **£3 for Adults** and **£2 for O65s, U21s, Students, U18s and U11s.**



## BY PHONE

The Ticket Office's phone lines are in operation

**Monday to Friday 11am - 5pm.**

Calls to **03330 14 44 44** are priced at standard rate. There is an administration charge of £2.50 per transaction for purchases made over the phone.



## ONLINE

Tickets for home matches that have been purchased online can be printed at home at supporters' own convenience. Simply bring the self-printed ticket to the turnstile and scan accordingly to gain entry to The Valley.

Tickets can be purchased via **booking.cafc.co.uk**

Alternatively, fans can choose to print their own ticket at home or have a mobile ticket sent to their phone. This can be scanned on your device at the turnstile to allow for a more seamless and digital matchday experience.

**All purchases made online are subject to a £1.50 booking fee.**

This applies per transaction, rather than per ticket.

## AWAY FANS

Our Ticket Office provide an allocation of tickets to our opponents ahead of every match at The Valley. Away fans wishing to purchase seats in the away end should contact their own club's Ticket Office to purchase them.

The only time Charlton will sell tickets to away fans will be on the day of the game, if they remain on sale. Tickets increase by **£3 for adults** and **£2 for concessions and U11s.**





# GETTING TO THE VALLEY

Here are the all the different routes to get to The Valley:



## BY CAR

The Valley's postcode is **SE7 8BL**. A lot of the roads around The Valley have parking restrictions and those driving to the ground are, therefore, advised to plan their journeys in advance.



## BY TRAIN

**Charlton station** is the nearest train station to The Valley and is just a three-minute walk away. Charlton station is served by trains travelling from London Cannon Street, London Charing Cross, Dartford and Gillingham. We advise fans travelling by train to plan their journey in advance.



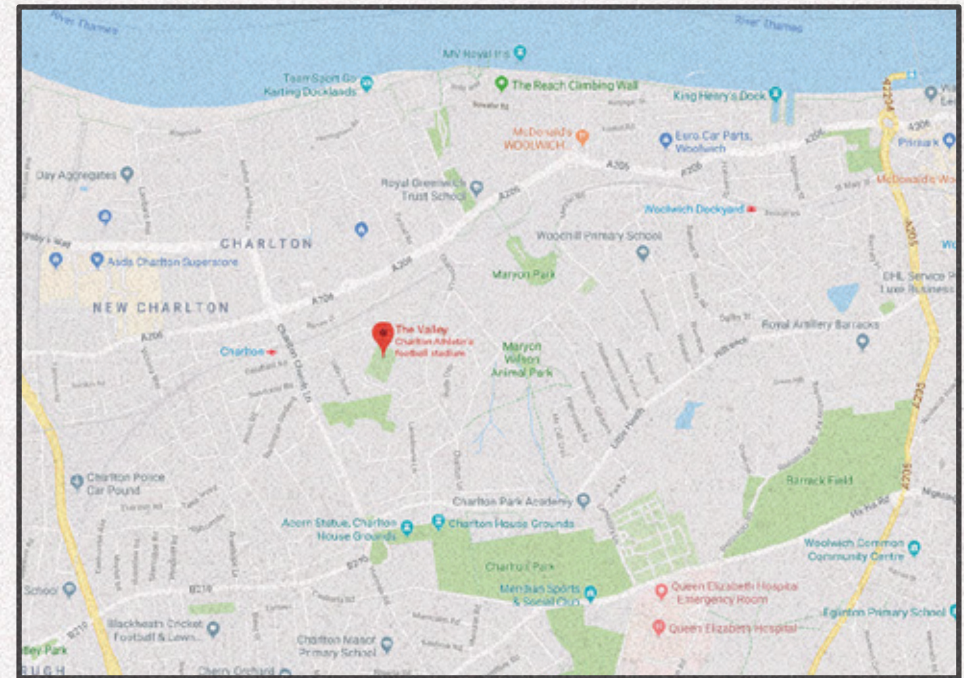
## BY TUBE

**Woolwich** and **North Greenwich** are the closest tube stations to The Valley. Woolwich is on the Elizabeth Line and North Greenwich is on the Jubilee Line. Bus stops with services to Charlton are at both stations and North Greenwich also has a large taxi rank.



## BY BUS

London Buses **472, 486, 161, 177** and **380** stop near to The Valley. Some of these can be boarded from North Greenwich tube station, which is around a 10-minute bus journey from The Valley.





# ARRIVING

Here are some things to do when arriving at the The Valley:



## TICKET COLLECTIONS

Tickets being collected within two hours of kick-off should be picked up from the **Covered End Ticket Office**, which is located at the rear of the Covered End in Harvey Gardens.



## CASHLESS STADIUM

The Valley is now cashless other than when you are attempting to purchase the match programme which is cash only. This means that no cash will be accepted for any other transactions in the stadium and we would advise people to make sure that they bring a payment card with them. There are cashpoints located outside of Charlton train station on either side of the road if needed.



## CHARLTON ATHLETIC MUSEUM

The Charlton Athletic Museum – located in The Valley's Covered End – is open 11am - 2.30pm most Fridays and 11am - 1pm on all Saturday home matchdays. Entry is free and is a great opportunity to learn about the club's illustrious history.



## TURNSTILES

The Valley's turnstiles open 90 minutes before the match is due to start – 1.30pm for a 3pm kick-off and 6.15pm for a 7.45pm kick-off. We would recommend that you take your seats early, so that you can enjoy all of our pre-match build-up.





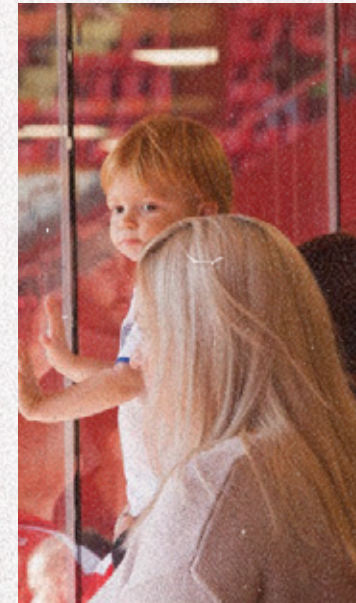
# FANS' BAR

Open on every home matchday to all season ticket holders and Charlton supporters with match tickets, the Fans' Bar is a free lounge where fans can relax before and after games at The Valley.

A warm, bustling retreat, the Fans' Bar is located in the Covered End and can cater for over 500 supporters at any one time.

The bar is accessible at half-time to fans sitting in the Covered End Upper, offers great views of The Valley's pitch and is a fantastic place for supporters to grab a drink and some food with their fellow fans.

Opening three hours prior to kick-off, the Fans' Bar also shows live games on its big screens, both before and after the Addicks' match has taken place.



# BARTRAM'S

Also open on every home matchday to all season ticket holders and Charlton supporters with match tickets, Bartram's is a free lounge where fans can come before and after games in the West Stand.

The bar is another great place for fans to grab a drink before and after the game, while watching live games on its big screens.

Bartram's opens two to three hours before kick-off, is accessible at half-time to supporters sitting in the West Lower and remains open for approximately one hour post-game.





# INFORMATION FOR DISABLED SUPPORTERS



## TICKETS

Tickets for fixtures at The Valley are sold to disabled supporters under the same terms and conditions as all Charlton Athletic fans. They are always priced at the relevant age category, which – if required – also includes a complimentary ticket for a personal assistant or carer. When booking tickets, disabled supporters will need to state their requirements. For example, if they require a headset, lift pass or parking space.

Tickets can be booked by calling the Ticket Office on **03330 14 44 44**, by visiting the Ticket Office in person or by emailing [tickets@cafc.co.uk](mailto:tickets@cafc.co.uk).



## REQUESTING A FREE PERSONAL ASSISTANT/ ESSENTIAL COMPANION TICKET

At Charlton Athletic we recognise that in order for some of our supporters to take advantage of all that we have to offer, they may need support from another person. To apply for a free personal assistant/ essential companion ticket, you need to send a copy of your letter from the Department of Work and Pensions (DWP) that confirms you receive medium to high rate disability allowance to **Charlton Athletic Ticket Office, The Valley, Floyd Road, London, SE7 8BL**.

Alternatively, you can email copies of it to [tickets@cafc.co.uk](mailto:tickets@cafc.co.uk).



## AMBULANT SUPPORTERS

Disabled supporters not requiring wheelchair access can sit anywhere in the ground with their PA/carers (subject to qualification), providing they are able to access the area, subject to safety requirements of the ground.



## WHEELCHAIR USERS

Wheelchair users are accommodated at the front of the West Stand Lower, behind blocks A and B in the Alan Curbishley Stand and behind the North East (Family Stand) and North West Quadrants, which allow the PA/carers to sit alongside them. We have lift access for those sitting in the Family Stand or North West Quadrants.



## TEMPORARY MOBILITY RESTRICTIONS

Supporters suffering from temporary mobility restrictions (e.g a broken leg) that may affect access to the stadium or seating areas, should contact the Disabled Liaison Officer (DLO) prior to the game to arrange alternative seating (subject to availability). To contact the club's DLO, please email: [dlo@cafc.co.uk](mailto:dlo@cafc.co.uk).



## PARKING

Supporters with mobility issues can book a parking space for matches once they have gone on general sale. If they cannot attend for any reason, fans need to inform the DLO within 24 hours of the game or they may lose their space for the next game. Spaces can be booked by emailing [disability.parking@cafc.co.uk](mailto:disability.parking@cafc.co.uk).



## PUBLIC TRANSPORT

All Transport For London (TFL) buses are now wheelchair accessible, as is Charlton Train Station and North Greenwich tube station. Buses can be boarded from North Greenwich to The Valley.



# VALLEY REVIEW

Boasting exclusive interviews and content every home matchday, Valley Review – the club's official programme – is an essential part of many Addicks' matchdays.

Valley Review includes a one-on-one interview with a member of the club's first-team squad in every edition, as well as possessing many more features that cater for supporters both young and old.

Valley Review is available to purchase in and around The Valley and all payments for the programme are cash only.

We also offer a programme subscription service, where we will send each issue of Valley Review to your home or a preferred address via first-class post.

## WANT A MESSAGE PRINTED IN VALLEY REVIEW?

If you want a message for a loved one or a friend printed in an upcoming edition of Valley Review – whether that be a birthday, good luck message or whatever - make sure you email it to [valley.review@cafc.co.uk](mailto:valley.review@cafc.co.uk) at least 72 hours before the game!

If your message is printed in Valley Review, it will also be read out over The Valley's PA system at half-time.





# THE VALLEY SUPERSTORE

The Valley Superstore is the only place where fans can stock up on official Charlton Athletic merchandise.

From our bespoke replica kits to training wear, hats and scarves and small gifts, The Valley Superstore sells a variety of products that suit all price ranges.

## THE VALLEY SUPERSTORE'S OPENING HOURS:

**Monday - Friday:** 9.30am - 5pm

**Non-Matchday Saturday:** 10am - 4pm

**Matchday Saturday:** 10am - 3pm & 30 minutes after final whistle

**Sunday:** Closed

Supporters can also purchase items online 24 hours a day, seven days a week by visiting [www.clubshop.cafc.co.uk](http://www.clubshop.cafc.co.uk)

Have a question for the Valley Superstore?  
Email: [clubshop@cafc.co.uk](mailto:clubshop@cafc.co.uk)





# FAMILY STAND

If you are coming as a family to The Valley and have young children with you, we would recommend that you take in the action from our dedicated Family Stand.



## LOCATION

Built in 2001, The Valley's Family Stand is located in the North-East quadrant of the stadium and affords a great view of the pitch. The Family Stand is populated with Addicks young and old. Please contact our Ticket Office for more information.



## FOOD & DRINK

The Family Stand's food kiosks are located at the top of the stand as you come in. Here, you can purchase hot and cold food & drink. Alternatively, upon entrance to the Family Stand, head down the stairs immediately in front of you and then turn right to use the Covered End Lower concourse.



## TOILETS

The nearest toilets for supporters sitting in the Family Stand are on the Covered End Lower concourse. As you enter the stadium through the Family Stand's turnstiles, head down the stairs and then both male and female toilets are on the right-hand side. We also have baby changing facilities available in the Family Stand. Please ask one of our matchday stewards for help with locating the nearest facility for you to use on a matchday.



## FLAG BEARING

Every match, we select 15 young fans to be flag bearers to welcome the team on to the pitch. If selected, you will be escorted to and from your seat by a member of staff to make sure you are safe and sound. Please view The Valley's Family Guide on [www.charltonafc.com](http://www.charltonafc.com) for more information on the Family Stand.





# FAMILY ACTIVITY ZONE

Our **FREE** Family Activity Zone runs every Saturday matchday between **12.15pm - 2.15pm** (for a 3pm kick-off ) and is a great way for young fans and families to begin their matchdays.

Located in the West Stand car park and Valley Central (opposite the club shop), there are lots of activities that take place to keep youngsters occupied, including FIFA battles on the Xbox, pool, table tennis, visits from the mascots, an inflatable to test your football accuracy skills, a panna cage and many other fun activities.

You can find out more information about the Family Activity Zone by emailing [fans@cafc.co.uk](mailto:fans@cafc.co.uk).





# CATERING & HOSPITALITY

Fans can enter the ground an hour and a half before kick-off and, once inside The Valley, supporters can stock up on refreshments in SE7's concourses. Serving a variety of hot and cold food and drinks, items can be purchased by using electronic methods, including mobile payments.

In 2019 Charlton Athletic partnered with Gather & Gather as the club's exclusive catering partner to provide all hospitality and non-matchday sales and in 2022 extended the current contract for another three years.

Gather & Gather provide all hospitality and retail concourse catering at The Valley on matchdays, as well as selling conference and events on non-matchdays including meetings, exhibitions, private events, weddings and parties.

Gather & Gather also cater for the men's and women's first teams, and the club's U23s and U18s at Charlton's refurbished Sparrows Lane training ground.

Each stand has a range of different offers available so please come early to beat the queues and most of the concourses have accessible TVs that show any televised games.

Why not have your event at your stadium?

Please contact [charltonevents@gatherandgather.com](mailto:charltonevents@gatherandgather.com) to book a space for wedding, birthday and special occasion and receive a 10% discount when showing Charlton season ticket pass.

For more information on offers, promotions and details for specific games, please visit [www.cafc.co.uk](http://www.cafc.co.uk).





# SUPPORTERS' GROUPS

As a fan of the club, we still want to make sure you feel included in the Charlton Athletic family. What better way to do this than by getting together with like-minded individuals to share your love of Charlton!

Charlton Athletic takes pride in the depth of its fanbase, and so we want to ensure that there is support available for fans all over the world. Football brings people together, and this is the perfect opportunity to reach out to those around you who may share your love for Charlton Athletic.

You now have the opportunity to officially affiliate with the club by being part of established group or become a new supporters' group, you can find out more information on our website at [www.charltonafc.com/fans/supporter-groups](http://www.charltonafc.com/fans/supporter-groups).

For further information or to get in contact with the club's Supporter Liaison Officer (SLO), please email [fans@cafc.co.uk](mailto:fans@cafc.co.uk).





# MUSEUM

Opened in November 2014, the Charlton Athletic Museum is a self-funded, volunteer initiative with a mission to preserve, present and promote the heritage of the club.

The museum – located in The Valley's Covered End (or North Stand) – is run by a group of passionate, volunteer trustees, who dedicate their time to finding out more about the club's illustrious history.

Possessing an array of rare and sought-after artefacts and exhibits, the museum is a great way for supporters to learn about Charlton's past.

Entry to the museum is free, though supporters are welcome to make a voluntary donation to the museum.

## OPENING HOURS:

**Every Friday:** 11am - 2.30pm

**Matchday Saturday:** 11am - 1pm

**By Appointment:** Please contact the museum directly to arrange this





# VALLEY GOLD

Valley Gold enables supporters to play a pivotal role in the future of Charlton Athletic by helping the club to unearth talented footballers through its youth system.

The organisation launched in 1989, with its original aim being to aid the club's return to The Valley. When this was achieved in December 1992, its focus switched to helping Charlton's academy to thrive.

Valley Gold is entirely supporter-funded. For an annual subscription of £120 members can win cash prizes at every home league match, £10 Vouchers in our daily draw and five random lucky members can watch a match in style from our Alan Curbishley Stand Executive Box.

You can also be in with the chance of winning up to £2,000 during the half-time interval by buying Jackpot Tickets and, as an additional bonus, a second prize of £100 is up for grabs as well.

The proceeds of the Jackpot Tickets are split 50/50, with 50% of the proceeds each game going to one lucky Addicks' supporters and the remaining 50% going to the Youth Academy, supporting the future of Charlton Athletic.

## BENEFITS OF MEMBERSHIP:

- £15 Full Season Ticket discount\*
- Chance to take part in the Crossbar Challenge to win cash prizes
- 10% discount in the Club Shop
- Greater ticket priority to away games, and those matches that are in high demand
- Valley Gold pen
- Annual newsletter and monthly e-newsletter
- Entry into U18 and U21 academy matches (you must produce your membership card)

\* In order to qualify for the £15 Full Season Ticket discount and priority tickets, you must have paid at least £60 towards your Valley Gold membership





# MATCHDAY TIMETABLE

(Based on a 3pm kick-off)

**10am:** The Ticket Office and The Valley Superstore opens.

**12pm:** The Covered End Fans' Bar opens.

**12.15pm:** Family Activity Zone opens.

**1.30pm:** The Valley's turnstiles open.

**2pm:** Team news! Both teams' line-ups for the match are confirmed and revealed on social media.

**2.20pm:** Both teams take to the pitch to go through their pre-match, warm-up routines, and the line-ups are read out on The Valley's PA system.

**2.45pm:** The Family Stand's selected flag bearers head to the front of the Alan Curbishley Stand to rouse the crowd ahead of kick-off. The warm-ups come to an end.

**2.55pm:** The teams, match officials and mascots head out of The Valley's tunnel ahead of kick-off.

**3pm:** Kick-off! The first-half action gets underway.

**3.45pm:** Half-time! The first-half comes to an end, giving supporters a chance to go to the toilet and get something to eat. The Valley Gold Crossbar Challenge takes place in front of the Covered End and the half-time messages and scores are read out.

**4pm:** Kick-off! The second half begins.

**4.50pm:** Full-time! The match comes to an end and, hopefully, we are celebrating a win! Remember, you can relax in the Fans' Bar while the crowds disperse.





# CLOSE TO THE VALLEY

## THE O2 ARENA

Since re-opening as the O2 Arena in 2007, the formerly known 'Millennium Dome' has become one of the country's most popular concert venues. No fewer than 60 million people have visited the O2 in the last decade, with some of the biggest names in music and comedy gracing its main stage.

## GREENWICH & GREENWICH PARK

Just a couple of miles from The Valley, Greenwich - the home of time - is packed full of history, local culture and stunning views of London. Greenwich Market, the National Maritime Museum, the Cutty Sark and the Old Royal Naval College are just a few things that this wonderful part of south London has to offer.

As well as this, Greenwich Park, one of the Royal parks of London, is located between Blackheath and Greenwich itself and offers stunning views of the capital's skyline and the Naval College.



## THAMES BARRIER

Just over half a mile from The Valley, the imposing-looking Thames Barrier was constructed in 1984 and is one of the largest moveable flood barriers in the world. Spanning 520 metres across the Thames at Woolwich Reach, the Thames Barrier has 10 steel gates that are tested every month and visitors to it are able to view a working scaled model in action.

## CENTRAL LONDON

Hop on a train at Charlton station - just a three-minute walk from The Valley - and you can be in central London in under 20 minutes. Once you arrive, London is your oyster...

The centre of the capital is also reachable from Charlton by bus, the 53 from Charlton Village and 188 from North Greenwich station, while the Jubilee Line can also be boarded from North Greenwich.



# VALLEY FACTS

Founded in 1905, Charlton Athletic did not move to The Valley until 1919 when the club found an abandoned sand and chalk pit in SE7. Lacking the money to fully develop the site, a large group of volunteer supporters dug out a flat area for the pitch at the bottom of the chalk pit and used the excavated material to build up makeshift stands.

In February 1938, an FA Cup tie against Aston Villa saw The Valley set its record attendance of 75,031. Apart from Wembley Stadium and Stamford Bridge, no London football ground has ever eclipsed this.

Charlton were forced to move away from The Valley between 1985 and 1992 and had to groundshare with Crystal Palace and West Ham United. Supporters formed a political party to help get the club back to SE7 and, after a seven-year exile, the Addicks returned to The Valley in December 1992, winning the first match back 1-0 against Portsmouth.

Upon returning to The Valley, the stadium's capacity stood at just 8,337. This was expanded by the completion of the new East Stand in 1994 and extended further by the construction of the two-tiered West Stand a few years later; The Valley's main stand. In 2002, The Valley's capacity reached what it is today, 27,111, following the redevelopment of the North Stand or 'Covered End' as it is known by supporters.





# GET INVOLVED WITH THE ADDICKS' ONLINE COMMUNITY!

When you arrive at The Valley, you can go behind the scenes and interact with fellow Charlton supporters on your social media accounts. Don't forget to share your photos of your day at The Valley on social media with **#CAFC** for your chance to be featured on the big screen, and your chance to win Charlton Athletic prizes!



**FACEBOOK** @officialCAFC  
@CAFCWomen

'Like' our official Facebook page for news of everything Charlton, whether that be highlights, ticket news, the academy and more. On a matchday, commenting on our Facebook posts is a great way for fans to interact with one another.



**TWITTER** @CAFCofficial  
@CAFCWomen

Revealing team news an hour before kick-off, our official Twitter account provides minute-by-minute updates of every game, as well as all of the post-match reaction on video, in pictures and in written pieces. Remember to post your own pictures, videos and predictions using **#CAFC**, and make sure you tag us in!



**INSTAGRAM** @cafcofficial  
@cafcwomen

Keeping you up to date through a number of picture-led posts, make sure you like our photos if they get your approval. Posting your own snaps? Tag us in!



**TIKTOK** @cafcofficial  
@charltonathleticw

Join Charlton Athletic on the the newest place for supporters to view exclusive club content. You'll get to see new Charlton videos in a more light-hearted way, including footage of players in the behind-the-scenes environment.



## OFFICIAL APP

And don't forget, a great way to keep across all things Charlton Athletic is by downloading the Charlton Athletic app! There are a whole range of features, news articles and interactive games to get stuck into so don't miss out, head to the app store and search '**Charlton Athletic**' now!

Have any feedback about your time at The Valley? Please email it to: [fans@cafc.co.uk](mailto:fans@cafc.co.uk)







# SEE YOU AT THE VALLEY

2023/24